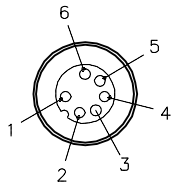


MALE END VIEW

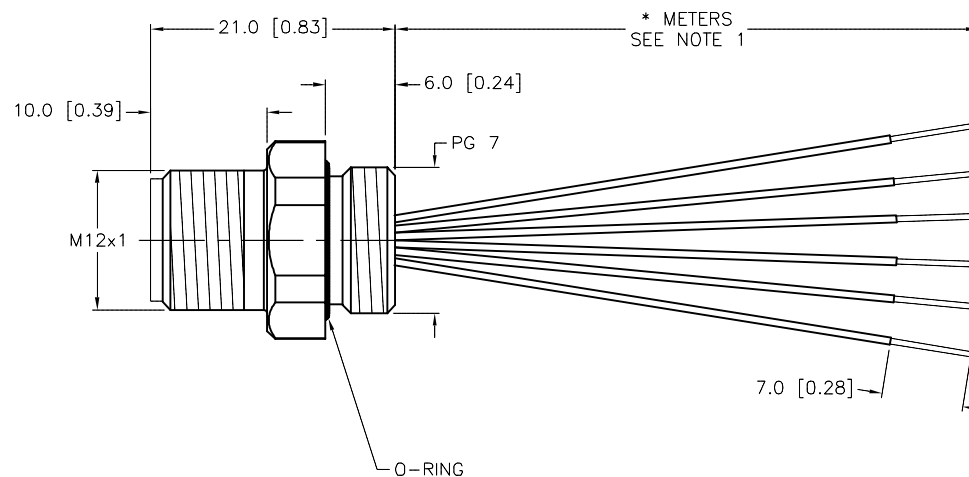
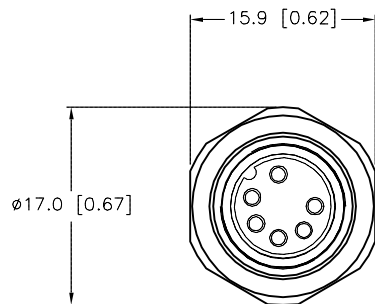


- 1 = BROWN
2 = WHITE
3 = BLUE
4 = BLACK
5 = GRAY
6 = PINK



SPECIFICATIONS

| | |
|-------------------------------|-----------------------------------|
| CONTACT CARRIER MATERIAL | NYLON OR TPU |
| CONTACT MATERIAL/PLATING | BRASS/GOLD |
| HOUSING MATERIAL/PLATING | BRASS/NICKEL |
| O-RING MATERIAL | NITRILE (BUNA N) |
| RATED CURRENT [A] | 2.0 A |
| RATED VOLTAGE [V] | 60 VAC/75 VDC |
| CONDUCTOR INSULATION MATERIAL | PVC |
| NUMBER OF CONDUCTORS [AWG] | 6x24 AWG |
| TEMPERATURE RATING | -40°C to +105°C (-40°F to +221°F) |
| PROTECTION CLASS | MEETS NEMA 1,3,4,6P AND IEC IP68 |



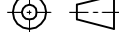

| CABLE LENGTH | TOLERANCE * |
|--------------|---|
| ALL LENGTHS | + 4% (OR 50mm) OF LENGTH - 0% (OR 0mm) OF LENGTH WHICHEVER IS GREATER |
| STRIP LENGTH | TOLERANCE * |
| 0-7mm | ±0.5mm |
| 8-29mm | ±1.0mm |
| 30-49mm | ±2.0mm |
| 50-69mm | ±3.0mm |
| 70-100mm | ±4.0mm |
| OVER 100mm | ±5.0mm |

* UNLESS OTHERWISE SPECIFIED

SOURCE DRAWING - FOR REFERENCE ONLY

NOTES:

1. "*" INDICATES CABLE LENGTH IN METERS. CONTACT TURCK TO ORDER SPECIFIC LENGTHS.

| | | | | | | | | | | | | | |
|---|------------------------------------|---|---------------------|--|---|--------------------|----------|--|--------------|--|-------------------------------|--|--|
| RELATED DOCUMENTS 1. 2. 3. 4. | 3RD ANGLE PROJECTION |  | | THIS DRAWING IS CONFIDENTIAL AND THE PROPERTY OF TURCK INC. USE OF THIS DOCUMENT WITHOUT WRITTEN PERMISSION IS PROHIBITED. |  | | | 3000 CAMPUS DRIVE MINNEAPOLIS, MN 55441 1-800-544-7769 (763) 553-7300 (763) 553-0708 fax www.turck.us | | | | | |
| | | | | | | | | | | | | | |
| | MATERIAL | ALL DIMENSIONS DISPLAYED ON THIS DRAWING ARE FOR REFERENCE ONLY | DRFT | | RDS | DATE | 04/22/14 | | | | DESCRIPTION FS 6-*/PG7 | | |
| | SEE SPECIFICATIONS | | APVD | | L.H. | SCALE | 1=.7 | | | | | | |
| FINISH | CONTACT TURCK FOR MORE INFORMATION | | UNIT OF MEASUREMENT | | | IDENTIFICATION NO. | | | REV B | | | | |
| SEE SPECIFICATIONS | | MILLIMETER [INCH] | | | | | | | | | | | |
| | | DO NOT SCALE THIS DRAWING | | | FILE: 777033380 | | | SHEET 1 OF 1 | | | | | |

| | | | | |
|-----|--------------------------|----|----------|---------|
| B | UPDATE CURRENT & VOLTAGE | NF | 07/25/16 | 55373 |
| REV | DESCRIPTION | BY | DATE | ECO NO. |